

# Plan A

1 BEDROOM + 1 BATH

# wood & water

INTERIOR 541 sq.ft.

EXTERIOR 55 sq.ft.

TOTAL 596 sq.ft.



The developer reserves the right to make changes and modifications to the information contained herein. Floorplans and floorplates are subject to change without notice. Please contact a developer sales representative for details. The developer may also make such further development modifications as are permitted by the disclosure statement, as may be amended, the contract of purchase and sale between a purchaser and developer (if applicable), or otherwise, E. & O.E.

# Plan A1

1 BEDROOM + 1 BATH

# wood & water

INTERIOR 549 sq.ft.

EXTERIOR 55 sq.ft.

TOTAL 604 sq.ft.



# Plan A2

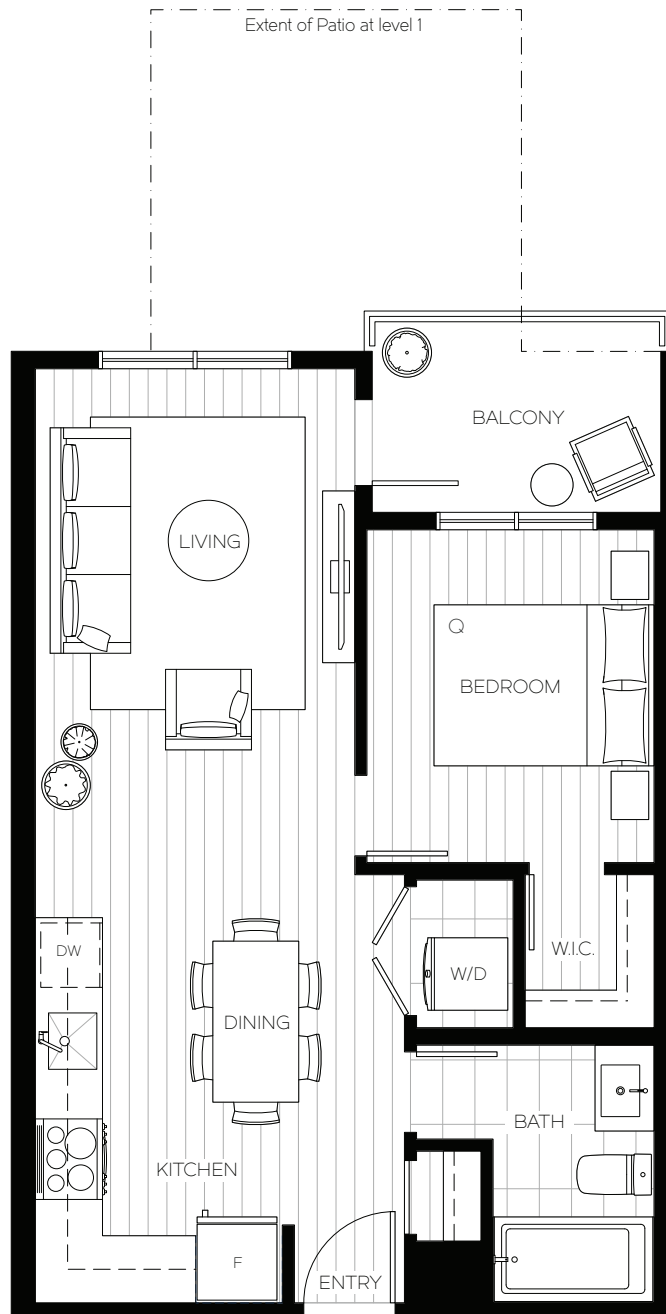
1 BEDROOM + 1 BATH

INTERIOR 549 sq.ft.

EXTERIOR 55 sq.ft.

TOTAL 604 sq.ft.

# wood & water

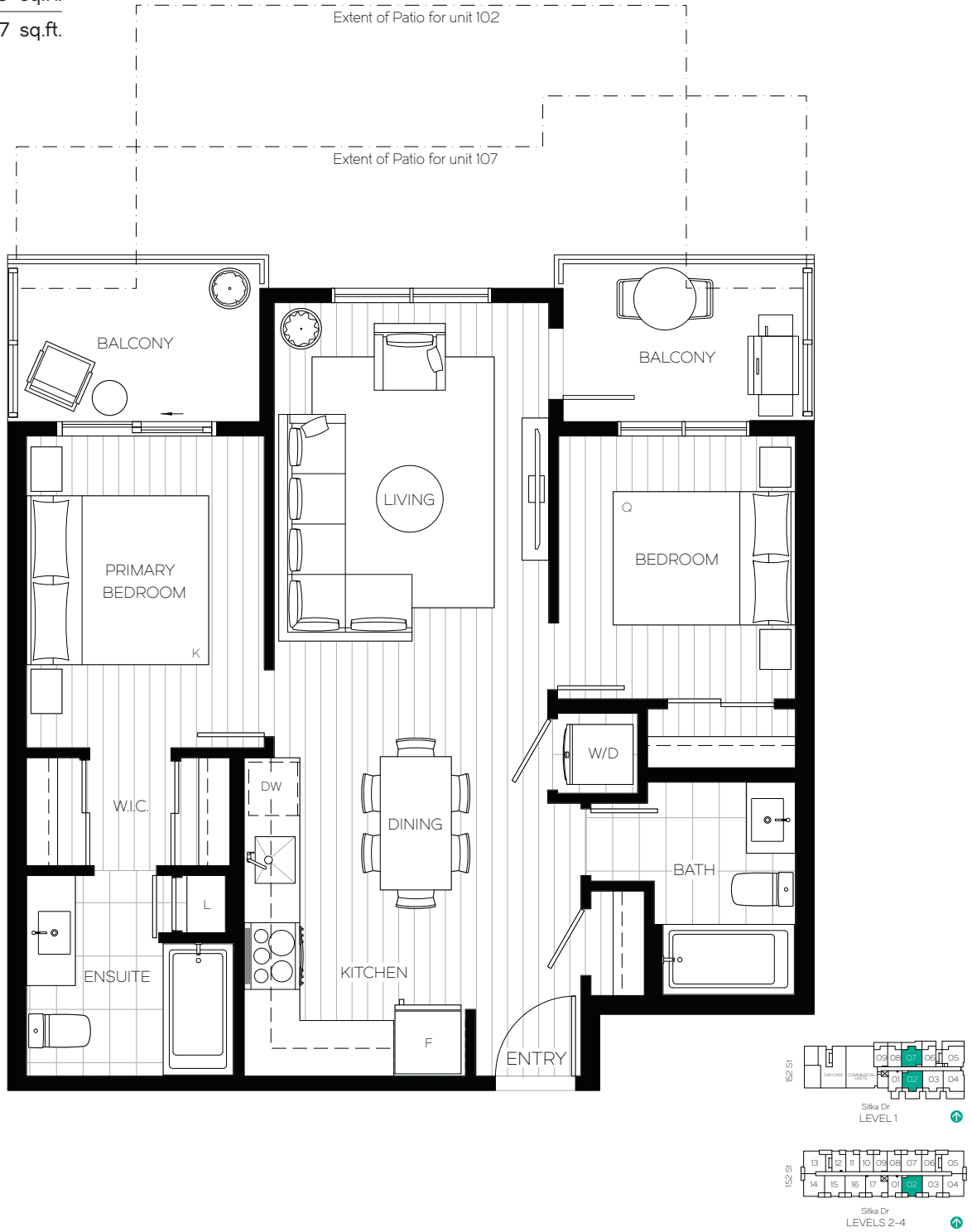


# Plan B

# wood & water

2 BEDROOM + 2 BATH

INTERIOR 767 sq.ft.  
 EXTERIOR 110 sq.ft.  
 TOTAL 877 sq.ft.



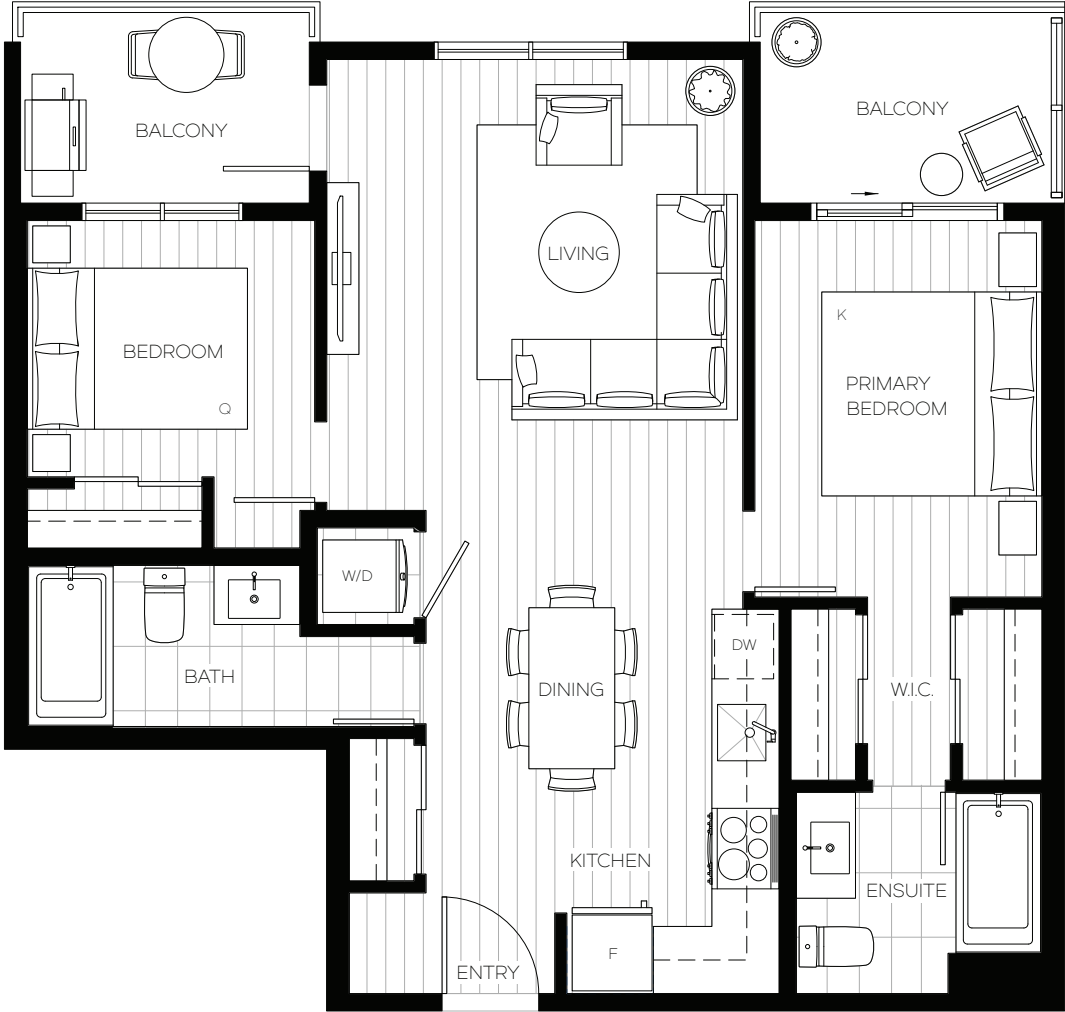
The developer reserves the right to make changes and modifications to the information contained herein. Floorplans and floorplates are subject to change without notice. Please contact a developer sales representative for details. The developer may also make such further development modifications as are permitted by the disclosure statement, as may be amended, the contract of purchase and sale between a purchaser and developer (if applicable), or otherwise, E. & O.E.

# Plan B1

# wood & water

2 BEDROOM + 2 BATH

INTERIOR 788 sq.ft.  
 EXTERIOR 110 sq.ft.  
 TOTAL 898 sq.ft.



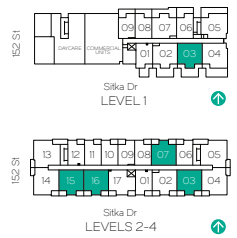
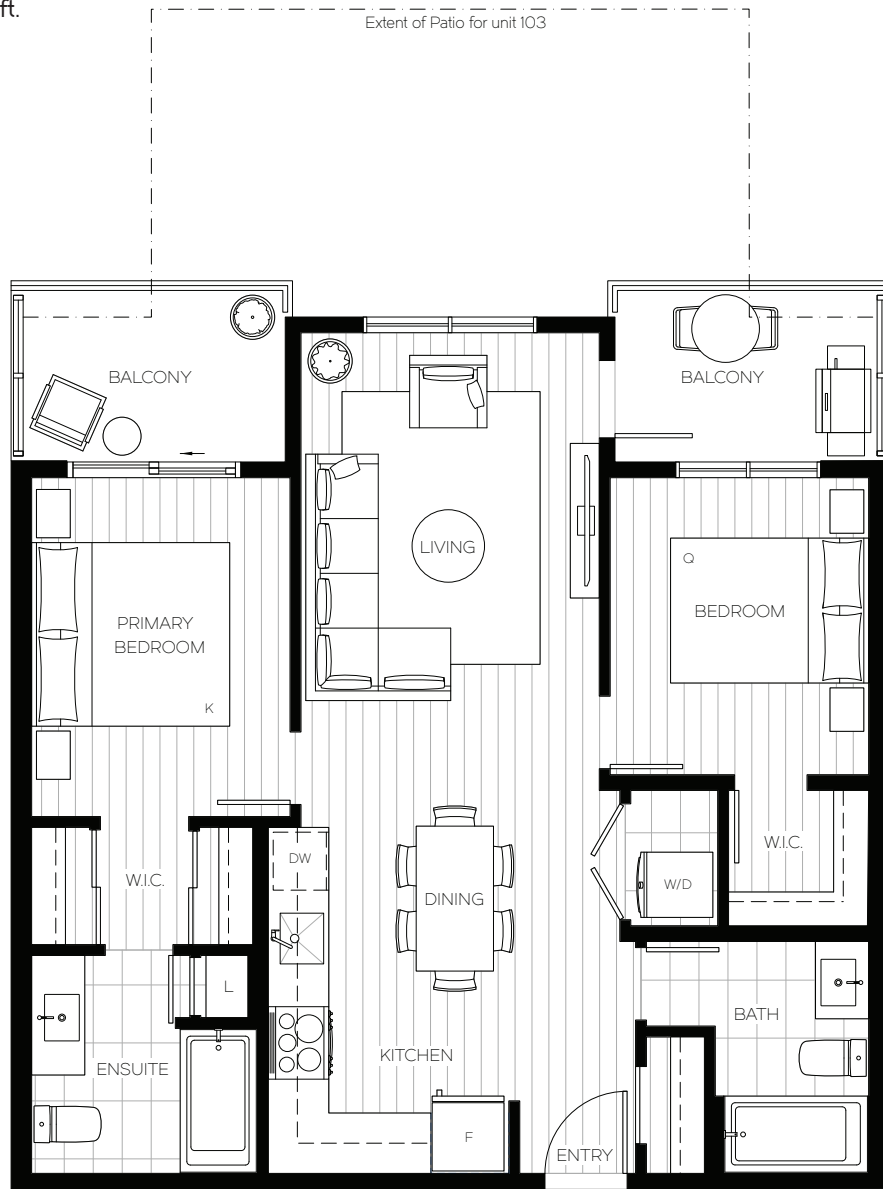
The developer reserves the right to make changes and modifications to the information contained herein. Floorplans and floorplates are subject to change without notice. Please contact a developer sales representative for details. The developer may also make such further development modifications as are permitted by the disclosure statement, as may be amended, the contract of purchase and sale between a purchaser and developer (if applicable), or otherwise, E. & O.E.

# Plan B2

# wood & water

2 BEDROOM + 2 BATH

INTERIOR 791 sq.ft.  
 EXTERIOR 110 sq.ft.  
 TOTAL 901 sq.ft.



The developer reserves the right to make changes and modifications to the information contained herein. Floorplans and floorplates are subject to change without notice. Please contact a developer sales representative for details. The developer may also make such further development modifications as are permitted by the disclosure statement, as may be amended, the contract of purchase and sale between a purchaser and developer (if applicable), or otherwise, E. & O.E.

# Plan B3

2 BEDROOM + 2 BATH

# wood & water

INTERIOR 788 sq.ft.

EXTERIOR 110 sq.ft.

TOTAL 898 sq.ft.



The developer reserves the right to make changes and modifications to the information contained herein. Floorplans and floorplates are subject to change without notice. Please contact a developer sales representative for details. The developer may also make such further development modifications as are permitted by the disclosure statement, as may be amended, the contract of purchase and sale between a purchaser and developer (if applicable), or otherwise, E. & O.E.

# Plan B4

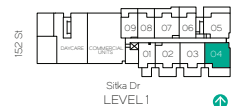
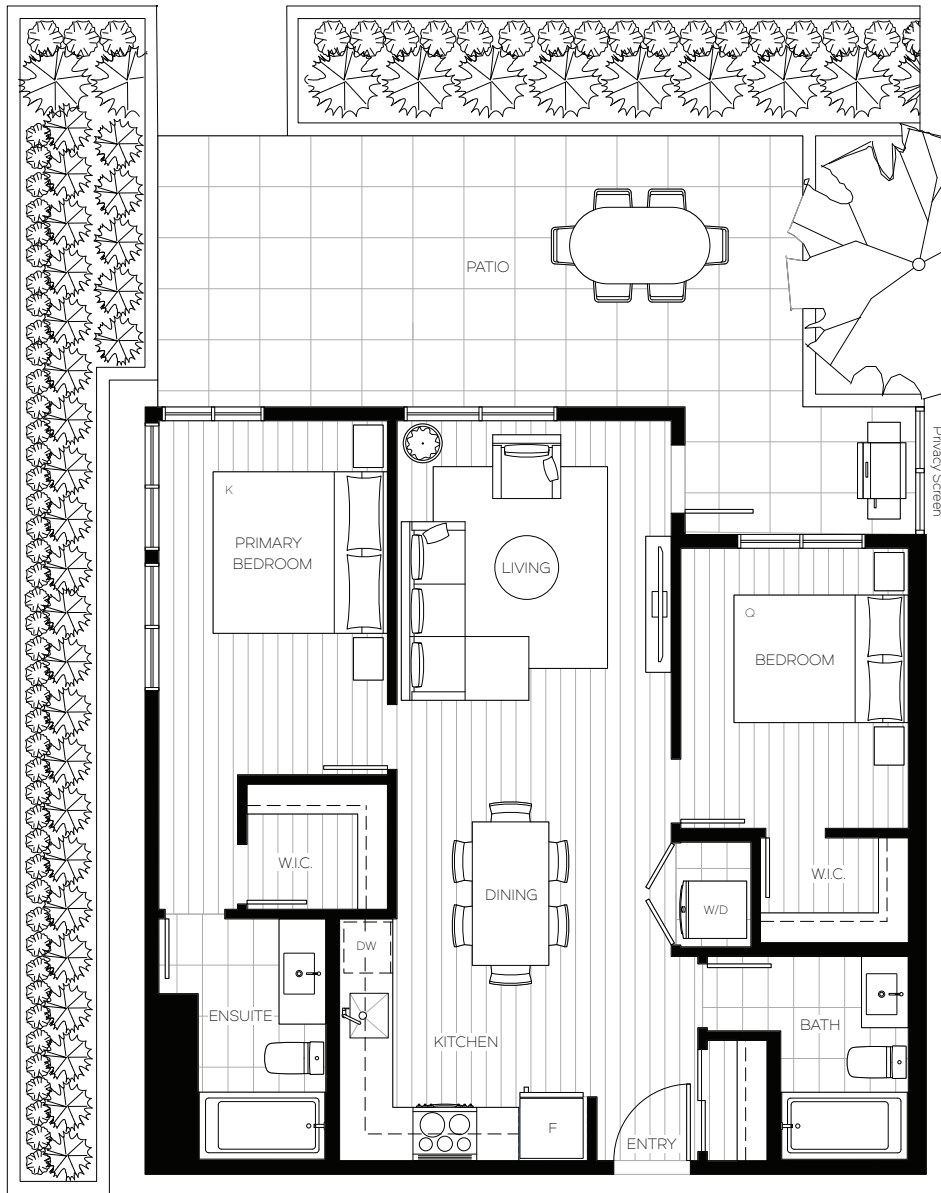
2 BEDROOM + 2 BATH

# wood & water

INTERIOR 847 sq.ft.

EXTERIOR 314 sq.ft.

TOTAL 1161 sq.ft.



The developer reserves the right to make changes and modifications to the information contained herein. Floorplans and floorplates are subject to change without notice. Please contact a developer sales representative for details. The developer may also make such further development modifications as are permitted by the disclosure statement, as may be amended, the contract of purchase and sale between a purchaser and developer (if applicable), or otherwise, E. & O.E.



# Plan B5

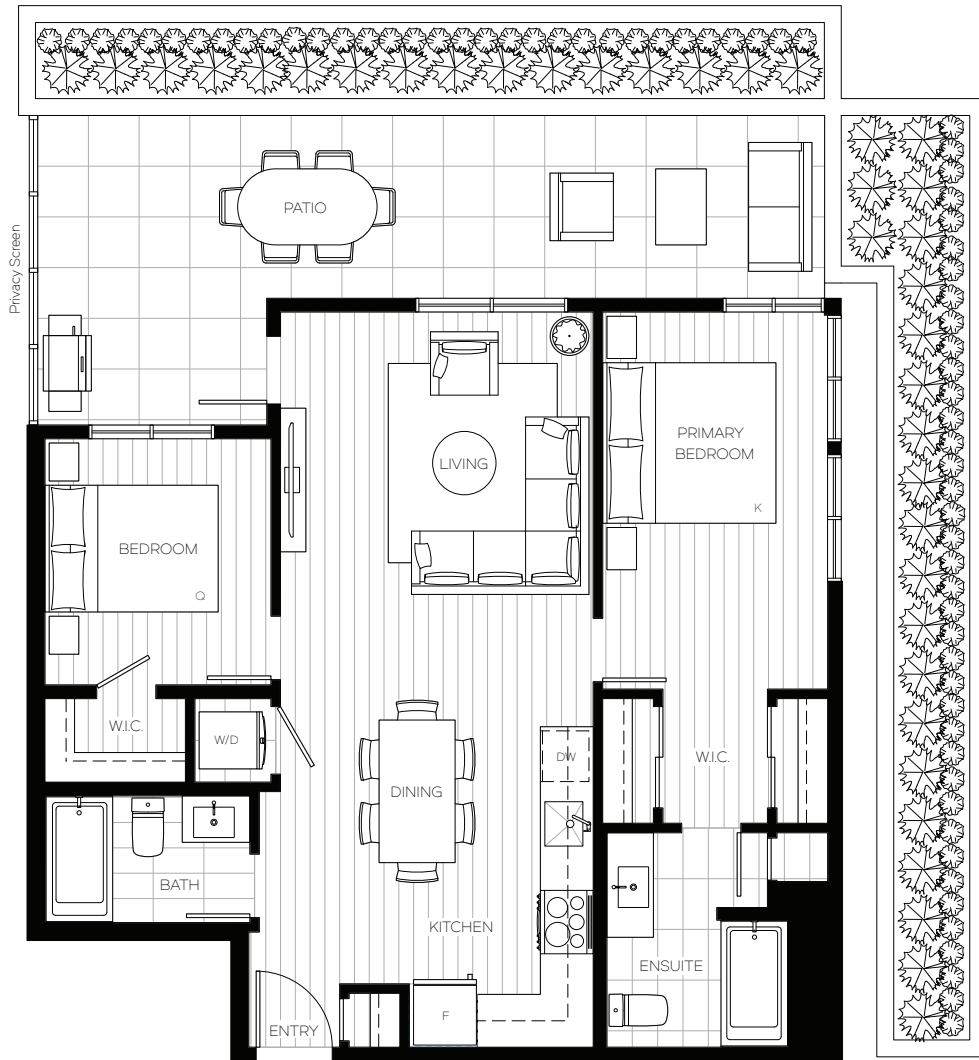
# wood & water

2 BEDROOM + 2 BATH

INTERIOR 853 sq.ft.

EXTERIOR 267 sq.ft.

TOTAL 1120 sq.ft.



# Plan C

# wood & water

2 BEDROOM + DEN + 2 BATH

INTERIOR 894 sq.ft.

EXTERIOR 47 - 55 sq.ft.

TOTAL 941-949 sq.ft.



# Plan C1

# wood & water

2 BEDROOM + DEN + 2 BATH

INTERIOR 938 sq.ft.

EXTERIOR 102 - 159 sq.ft.

TOTAL 1,040 - 1,097 sq.ft.



The developer reserves the right to make changes and modifications to the information contained herein. Floorplans and floorplates are subject to change without notice. Please contact a developer sales representative for details. The developer may also make such further development modifications as are permitted by the disclosure statement, as may be amended, the contract of purchase and sale between a purchaser and developer (if applicable), or otherwise, E. & O.E.